

Client:

Kent Companies

Project:

The River House Condominiums, the tallest building in Grand Rapids, and the tallest all-residential building in Michigan opened to rave reviews in November, 2008. Prior to final construction, design changes needed to be made on most of the 34 floors of the building. These changes necessitated that all post tension cables be located and mapped to avoid damage during the change process

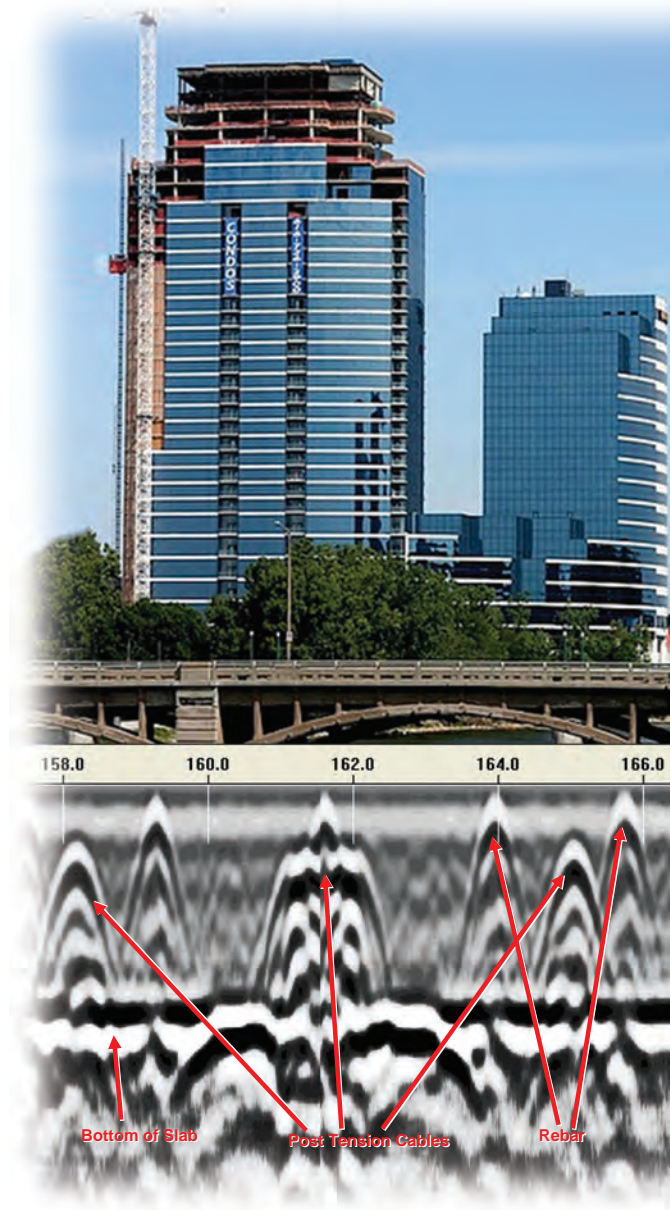
Plan:

In consultation with the client Diamond developed a plan to non-destructively survey different locations on 30 out of the 34 floors in the building. The plan called for using Diamond's Ground Penetrating Radar (GPR) SIR 20 systems, with Radan software and onsite 3D capabilities.

Process:

Using a 1500 MHz antenna Diamond engineering staff spent over 60 hours structurally scanning over 100 different locations throughout the building—floors 1 through 30—verifying and mapping the location and depth of post tension cabling.

Continued on back



Outcomes:

According to Paul Bowne, from Kent Companies, Diamond was always available when needed. “They were very responsive,” he said. “They conducted scans on 20 different occasions, always adjusting their schedule to ours, and always meeting the set timelines. By using Diamond,” conclude Bowne, “we avoided both, the potential for the massive expense of damaging post tension cable and for delaying completion of the project.”

As a “customer-first” company, Diamond is widely recognized as a process and technology leader. It provides subsurface imaging (ground penetrating radar — GPR) services to satisfy the needs of knowledgeable customers throughout the country who demand immediate and safe solutions, within budget, and on-time. As only one of a few companies in the industry where all operators are OSHA and CPR Certified, Diamond provides customers with the assurance of a safe operational environment. Proven knowledge and expertise, immediate availability, safety, on-time completion and continuing innovation makes Diamond the sensible choice for GPR services.

For more information on how Diamond can meet all of you Subsurface imaging needs call 1.800.968.3745 or email info@diamondsubsurfaceimaging.com



Diamond Subsurface Imaging guarantees that if after scanning the requested target area, we cannot provide you with a usable scan of that area we will only bill for the mobilization and living expenses if applicable. No one else offers this guarantee.

DIAMOND
SUBSURFACE IMAGING

It's not only what we do, but how we do it.

1.800.968.3745

www.diamondsubsurfaceimaging.com