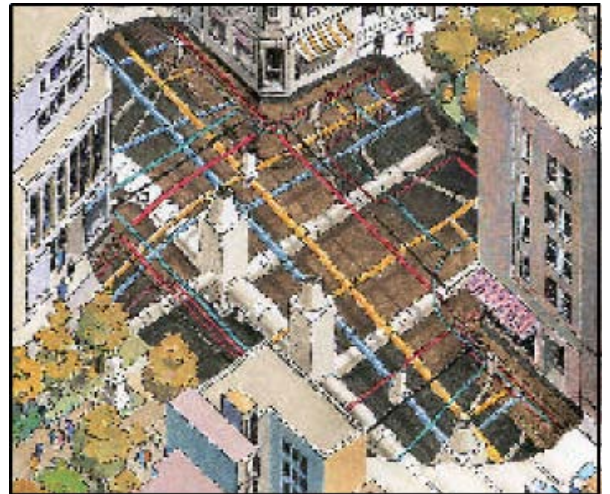


Utility Detection: Problem and Solution

PVC pipes, water mains, concrete storm drains, clay pipes.....

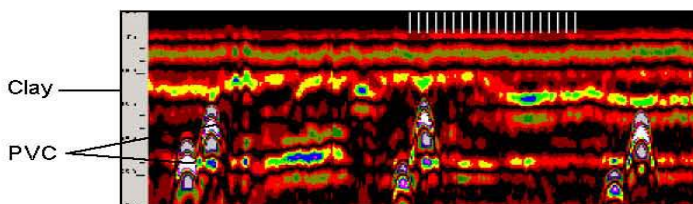
In today's construction environment, technology changes so fast that you never know what surprises are waiting for you on the job site. Making sure that you have the right tool in your truck is essential. That's where UtilityScan comes in. Sure, that RF locator is great, and you swear by it, but when it comes to complex utility layouts or non-traceable utilities, you need something more.

Are you putting too much faith in those 25 year-old as-built maps? How comfortable are you marking out a trench when you are not 100% sure that you've located everything? Just a quick UtilityScan survey and you can have that total confidence that comes with knowing your jobsite "inside and out."

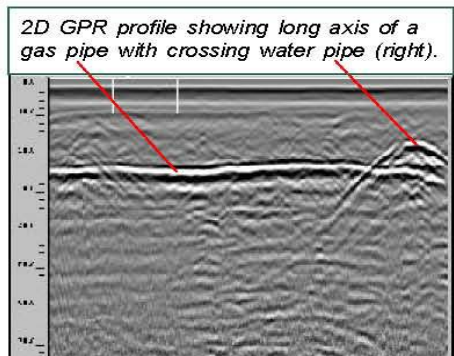


UtilityScan Data

UtilityScan's exceptional data quality, combined with full color viewing, lets you locate utilities easily and accurately.



GPR data from the UtilityScan system showing PVC pipes under a layer of clay.



2D data showing multiple Underground Storage Tanks.

